

Item # CUY 45M5, Hydronic Series Liquid to Liquid Heat Exchangers

Boiler Water to Domestic Water for Freeze Protection, District Heating, Cogeneration and Solar Energy applications

Vented Double-Wall, Mechanically Cleanable, Tube-in-Tube



Call dii

Specifications

Application	Potable
Heat Transfer	900,000 Btuh
Length	53 "
Width	27 "
Height	34 "
Hot Conn	2 1/8 "
Cold Conn	2 1/8 "
Weight	675 lbs

Benefits

- Vented double-wall construction prevents cross contamination
- Compatible material for easy installation
- Clog-resistant and mechanically cleanable
- High-performance counterflow design
- Compact, rigid design is ready to install

Features

Available in all-copper construction, the Hydronic Series provides desirable material compatibility for fast and easy installation. The series is also available in 90-10 cupronickel and stainless steel for highly corrosive applications. The Hydronic Series is available in sizes from 50,000 Btu's through 1,000,000 Btu's and Doucette Industries will custom design models for specific applications.



20 Leigh Drive,
York, Pennsylvania 17406-8474



Website: www.doucetteindustries.com



Phone: 717-845-8746
Toll-free: 800-445-7511
Fax: 717-845-2864



Commercial/Industrial: AdamM@doucetteindustries.com
Residential/Light Commercial: AdamM@doucetteindustries.com



Other Applications

- Snow Melt
- Freeze Protection
- Domestic Hot Water
- Industrial Processes
- District Heating Facility
- Solar Energy
- Cogeneration

Rating Conditions and Specifications

Hotside: Boiler Water entering at 180°F, leaving at 160°F. Pressure Drop < 2 psig

Coldside: Domestic Water entering at 100°F, leaving at 140°F. Pressure Drop < 4 psig

Design Pressure: 300psig both circuits



20 Leigh Drive,
York, Pennsylvania 17406-8474



Phone: 717-845-8746
Toll-free: 800-445-7511
Fax: 717-845-2864



Website: www.doucetteindustries.com

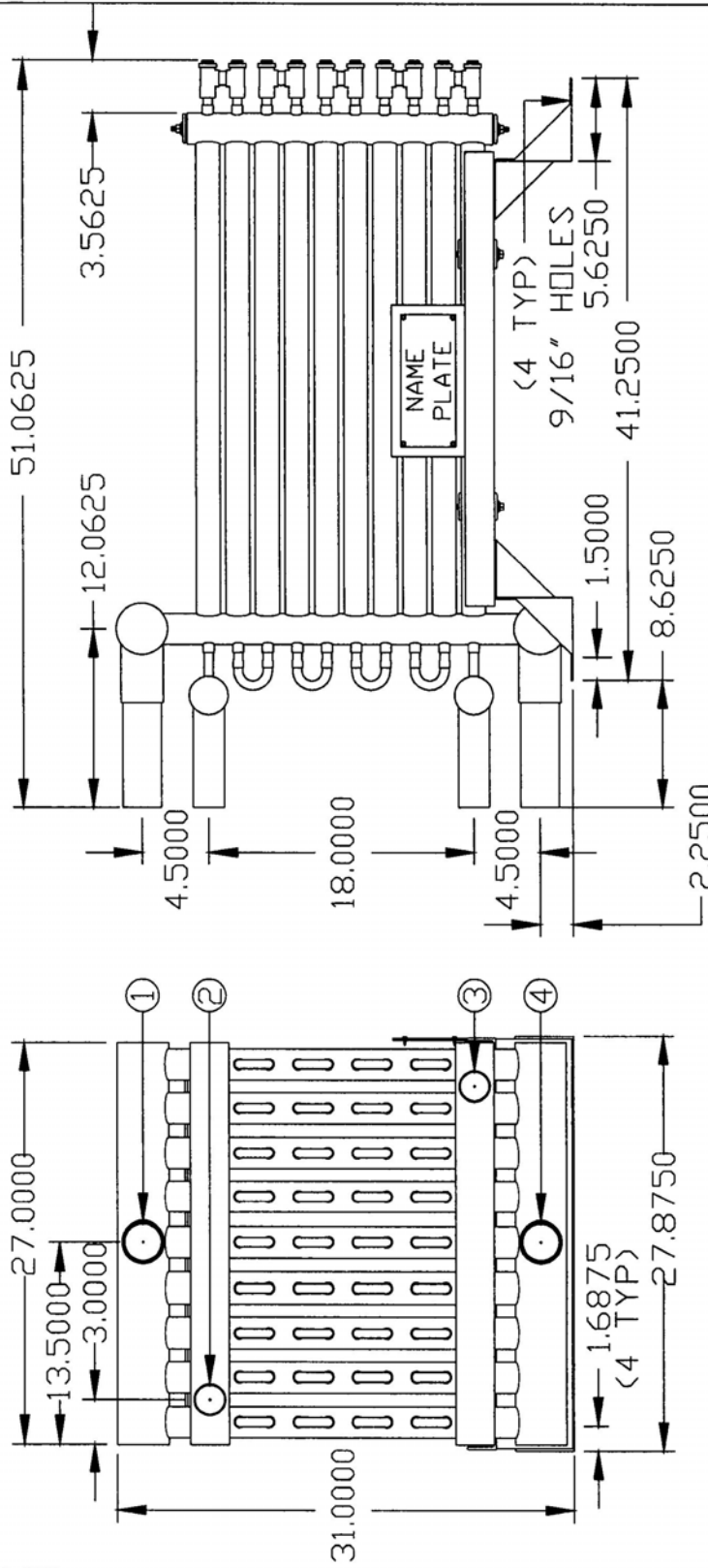


Commercial/Industrial: AdamM@doucetteindustries.com
Residential/Light Commercial: AdamM@doucetteindustries.com



doucette
industries, inc

ork User, Doucette Industries 1/26/2016 9:11 AM CUY-45M5-1P-10SCC



DESIGN PRESSURE:
SHELLSIDE 300PSIG
TUBESIDE 300PSIG

TOLERANCES	DOUCETTE INDUSTRIES, INC.	
DECIMAL	.125	SCALE
FRACTIONAL		DRAWN BY: RLK
		APP. BY: RJR
		TITLE
		CUY 45M5/1P-10SCC (F) HP
		DATE
		1/18/16
		DRAWING NUMBER
GAUGE	ALL DIMENSIONS INCHES, UNLESS SPECIFIED	

CONNECTIONS:

- 1.) HOT SUPPLY
- 2.) COLD RETURN
- 3.) COLD SUPPLY
- 4.) HOT RETURN

- | | | |
|--------|----|--------------|
| 2-5/8" | DD | COPPER SWEAT |
| 2-1/8" | DD | COPPER SWEAT |
| 2-1/8" | DD | COPPER SWEAT |
| 2-5/8" | DD | COPPER SWEAT |



20 Leigh Drive,
York, Pennsylvania 17406-8474



Phone: 717-845-8746
Toll-free: 800-445-7511
Fax: 717-845-2864



Website: www.doucetteindustries.com



Commercial/Industrial: AdamM@doucetteindustries.com
Residential/Light Commercial: AdamM@doucetteindustries.com