



Call dii

Item # HSE60MP, Shell & Tube Fresh Water Condenser

For Shell & Tube applications, please consult factory.

Specifications

| | |
|------------------|--|
| HP | 65.0 |
| Diameter-in. | 12-3/4 |
| Length-in. | 60 |
| Gas-IDS | 2-5/8 |
| Liquid-IDS | 1-5/8 |
| Water-FPT | 4 |
| R-410A Pump Down | 195 |
| Weight-lb. | 484 |
| Perf | 1 HP = 15,000 Btuh, R-410A 85F EWT, 95F LWT, 105F CT |
| Design | U.L. or ASME 600 psig DWP shell 150 psig DWP tube |
| Construction | All carbon steel with enhanced surface copper tubes Epoxy coated tube sheets and water covers Pump down capacity at 90% full with R-410A |



20 Leigh Drive,
York, Pennsylvania 17406-8474



Website: www.doucetteindustries.com



Phone: 717-845-8746
Toll-free: 800-445-7511
Fax: 717-845-2864

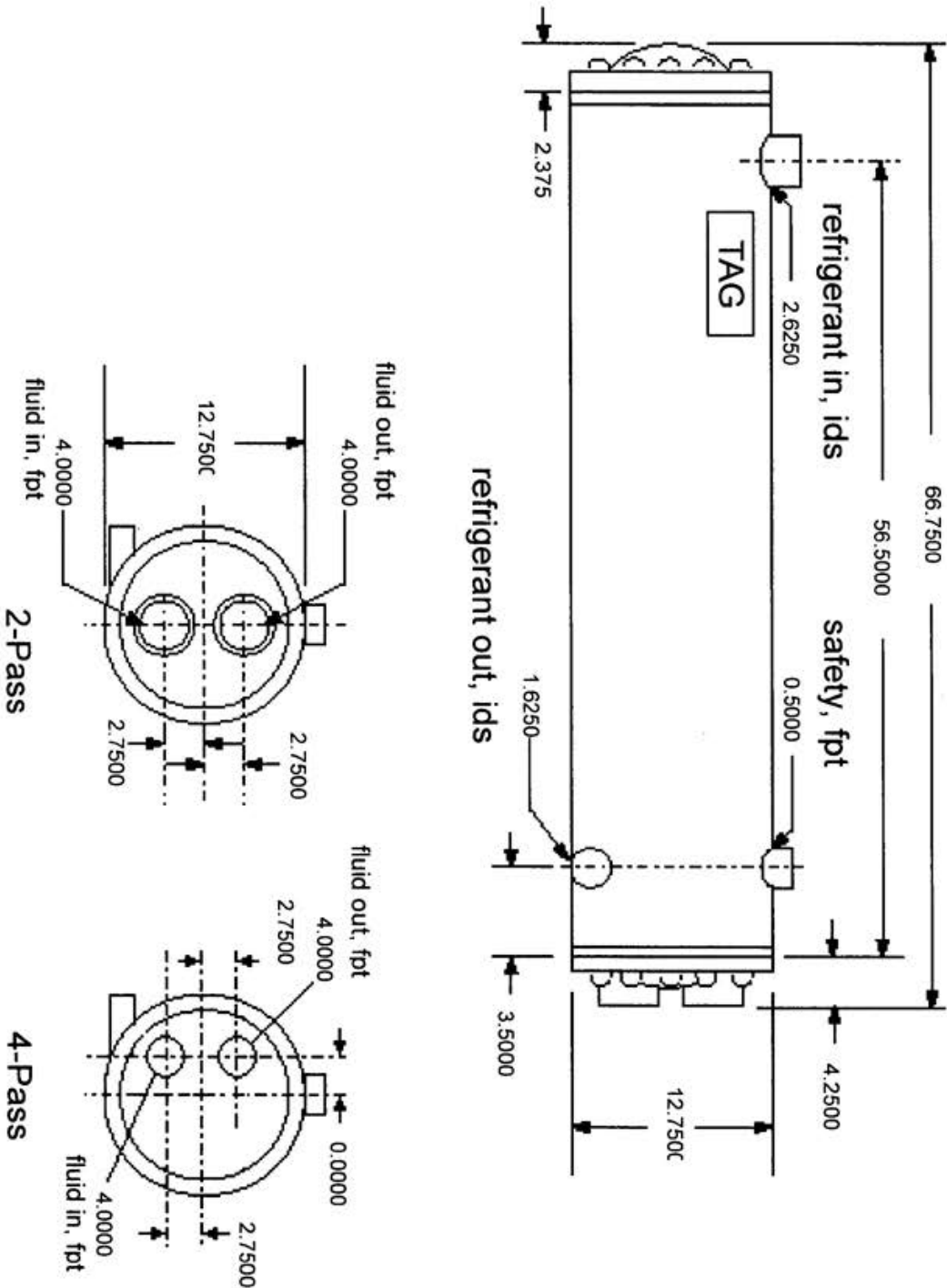


Commercial/Industrial: AdamM@doucetteindustries.com
Residential/Light Commercial: AdamM@doucetteindustries.com



Dimensions in inches.

Doucette Industries reserves the right to change design or specifications without notice.



HSE-60



20 Leigh Drive,
York, Pennsylvania 17406-8474



Phone: 717-845-8746
Toll-free: 800-445-7511
Fax: 717-845-2864



Website: www.doucetteindustries.com



Commercial/Industrial: AdamM@doucetteindustries.com
Residential/Light Commercial: AdamM@doucetteindustries.com