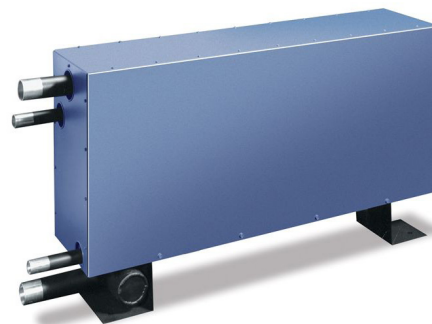


## Item # DC 50, DC Series Chemically Cleanable Desuperheaters (5 to 100 tons)



**\$11,600.00**

**Heat recovery unit for domestic hot water from air conditioning and refrigeration systems up to 100 tons**

DC Series Chemically Cleanable Commercial Desuperheaters recycle rejected heat from your air conditioning or refrigeration system and use it to heat water or other fluids. At the same time, desuperheating lowers refrigerant temperature and pressure, reducing energy input to the compressor. You save by reducing or eliminating the energy required for water heating while increasing the efficiency of the air conditioning/refrigeration system.

- Heats potable water up to 140 °F using waste heat
- Typical Payback Period of Two Years or Less
- Reduces A/C operating costs 5% to 10%
- Chemically Cleanable Counterflow Design
- Compact and Ready to Install
- Works with All Major Manufacturers' Systems

### Specifications

TR	50 tons	
Application	<ul style="list-style-type: none"> <li>• Domestic Hot Water Heating</li> <li>• Process Water Heating</li> <li>• Space Heating</li> <li>• Pool Heating</li> <li>• Hot Deck Reheat</li> <li>• Sub-Soil Heating</li> <li>• Restaurants</li> <li>• Hotels/Motels</li> <li>• Hospitals</li> <li>• Schools</li> <li>• Food Processing</li> <li>• Ice Rinks</li> <li>• Dormitories</li> </ul>	
# Circuits	1	
Cleanability	Chemical	
Refrig. Conn.	2-1/8" OD	



20 Leigh Drive,  
York, Pennsylvania 17406-8474



Website: [www.doucetteindustries.com](http://www.doucetteindustries.com)



Phone: 717-845-8746  
Fax: 717-845-2864



Commercial/Industrial: [johnL@doucetteindustries.com](mailto:johnL@doucetteindustries.com)  
Residential/Light Commercial: [johnL@doucetteindustries.com](mailto:johnL@doucetteindustries.com)

Water Conn.	1 3/8" OD
Length	50-1/8 "
Width	10-3/4 "
Height	23-3/16 "
Weight	390 lbs

#### Mechanical Specifications

Optional Pump	Grundfos UPS15-55 SFC, Circulating Pump (\$1,075.00)
Heat Exchanger	Chemically cleanable, vented double wall, U.L. listed, 450 psig shell side DWP (optional 600 psig), 300 psig tube side DWP
Cabinet	0.040" Aluminum Alloy, insulated, weather-resistant cabinet, with removable service panel. Bottom mounting rails provided as standard.



20 Leigh Drive,  
York, Pennsylvania 17406-8474



Phone: 717-845-8746  
Fax: 717-845-2864



Website: [www.doucetteindustries.com](http://www.doucetteindustries.com)

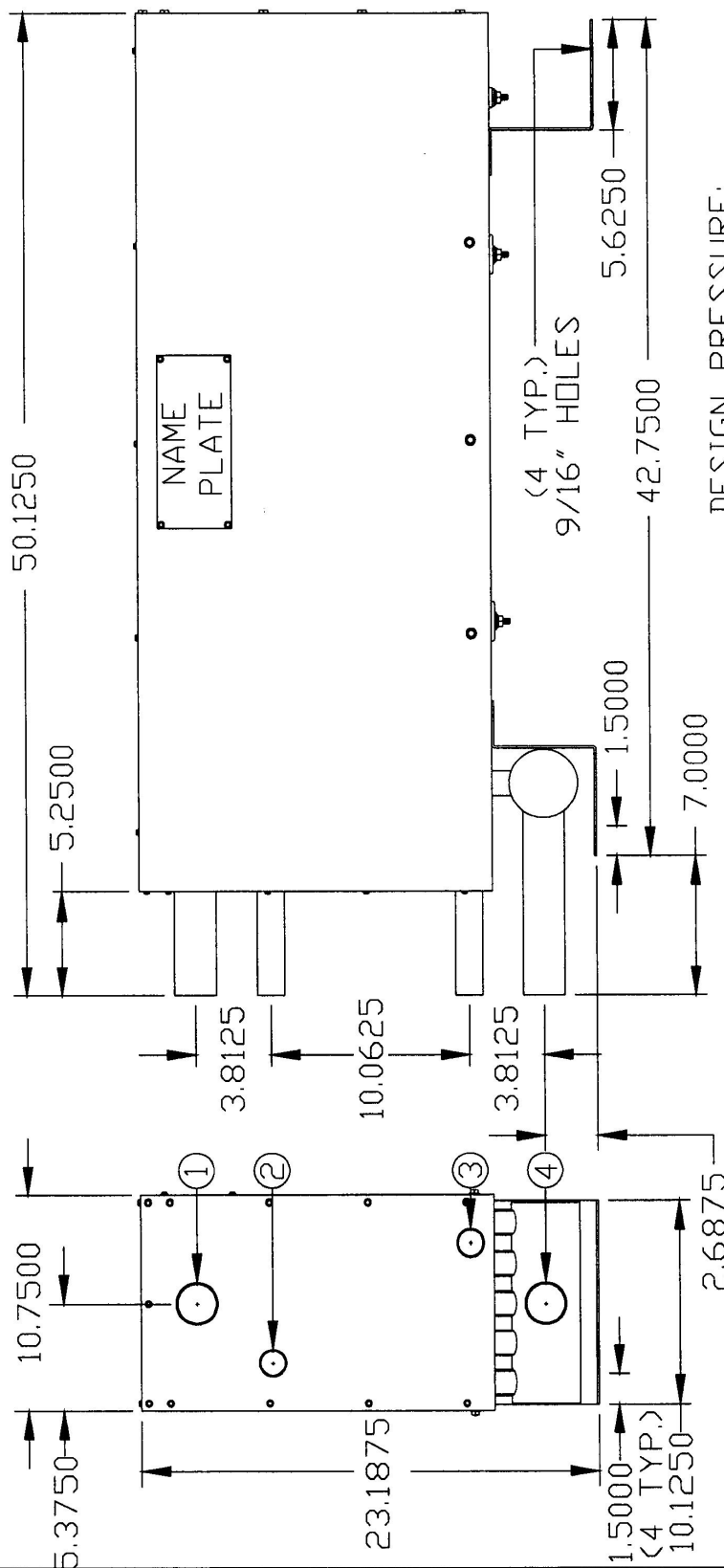


Commercial/Industrial: [johnL@doucetteindustries.com](mailto:johnL@doucetteindustries.com)  
Residential/Light Commercial: [johnL@doucetteindustries.com](mailto:johnL@doucetteindustries.com)



**doucette**  
industries, inc

Network User, Doucette Industries 12/16/2015 3:06 PM 96316.dwg



DESIGN PRESSURE:  
SHELLSIDE 450PSIG  
TUBESIDE 300PSIG

TOLERANCES		DOUCETTE INDUSTRIES, INC.	
DECIMAL	.125	SCALE	DRAWN BY: RLK
±			APP. BY: RJR
FRACTIONAL		TITLE	DC 50 (C)
±		DATE	12/16/15
		DRAWING NUMBER	96316
GAUGE	20	ALL DIMENSIONS INCHES, UNLESS SPECIFIED	

CONNECTIONS:

1.) REFRIGERANT SUPPLY	2-1/8" OD COPPER SWEAT
2.) WATER RETURN	1-3/8" OD COPPER SWEAT
3.) WATER SUPPLY	1-3/8" OD COPPER SWEAT
4.) REFRIGERANT RETURN	2-1/8" OD COPPER SWEAT

44.875 X 10.75 X 17.875



20 Leigh Drive,  
York, Pennsylvania 17406-8474



Phone: 717-845-8746  
Fax: 717-845-2864



Website: [www.doucetteindustries.com](http://www.doucetteindustries.com)



Commercial/Industrial: [johnL@doucetteindustries.com](mailto:johnL@doucetteindustries.com)  
Residential/Light Commercial: [johnL@doucetteindustries.com](mailto:johnL@doucetteindustries.com)