

## Item # CADS 56M8, CADS Series Ammonia Desuperheaters (25 to 325 tons)



**Call dii**

**For Ammonia Refrigeration Systems**

**Heats Hot Water Utilizing Waste Heat From Industrial Refrigeration Systems**

**The Doucette CADS Extends Your Hot Water Capability Inexpensively**

- Lowers hot water heating costs by utilizing waste heat
- Heats potable water up to 140 °F
- Reduces refrigeration operating costs 3% to 5% by adding the equivalent of 15% more condenser capacity
- Typical Payback Period of Two Years or Less
- Vented double-wall construction prevents cross contamination
- UL and USDA Listed with CRN

The Doucette Industries CADS Series Ammonia Desuperheater/Water Heater™ delivers cost-effective energy savings by heating potable water through the recovery of waste heat from industrial refrigeration systems. The CADS unit supplements potable hot water heating used for process applications by capturing "superheat" which accounts for approximately 10% to 15% of the total system heat of rejection. The CADS Series can effectively heat the water up to 140 °F.

- Food Processing Plants
- Food Distribution Plants
- Beverage Plants
- Ice Rinks

### Specifications

TR	175 tons
Cleanability	Mechanical
Refrig. Conn.	4" BW
Water Conn.	1-1/4" MPT
Length	68 "
Width	28 1/2 "



20 Leigh Drive,  
York, Pennsylvania 17406-8474



Website: [www.doucetteindustries.com](http://www.doucetteindustries.com)



Phone: 717-845-8746  
Toll-free: 800-445-7511  
Fax: 717-845-2864



Commercial/Industrial: [AdamM@doucetteindustries.com](mailto:AdamM@doucetteindustries.com)  
Residential/Light Commercial: [AdamM@doucetteindustries.com](mailto:AdamM@doucetteindustries.com)

Height	40-1/4 "
Weight	1300 lbs
GPM <sup>1</sup>	12.74 gpm
Application	Screw Compressor

<sup>1</sup> Performance: GPM of potable water heated from 60°F to 110°F with TR shown and 220°F discharge temperature.

### Field-Proven Performance

The CADS Series utilizes efficient counterflow design with low refrigerant pressure drop for efficient operation. The CADS Series includes positive oil and liquid refrigerant return design for compressor protection, and the unit is equipped with high pressure water fittings for mechanical cleaning.

### Vented Double Wall for Safety and Reliability

The CADS series of ammonia Desuperheater / Water Heater tubes are designed with vented double-wall stainless steel construction for an added measure of safety and reliability. The double-wall system prevents contamination of the potable water from the refrigeration circuit and guarantees Desuperheater compliance with all code requirements. Each tube is fluted such that a vent path is created between the outer and inner tube. If a tube leak should ever occur, the gas vents to the atmosphere for easy detection. This double protection system is endorsed by the USDA for food protection.

### Applicable to All Brands of Ammonia Refrigeration Equipment

Doucette Desuperheaters can be used for hot water with any industrial refrigeration system where waste heat is available. The unit is designed to integrate with all brands of compressors including: Frick, FES, Vilter, Mycom and others.



20 Leigh Drive,  
York, Pennsylvania 17406-8474



Phone: 717-845-8746  
Toll-free: 800-445-7511  
Fax: 717-845-2864



Website: [www.doucetteindustries.com](http://www.doucetteindustries.com)

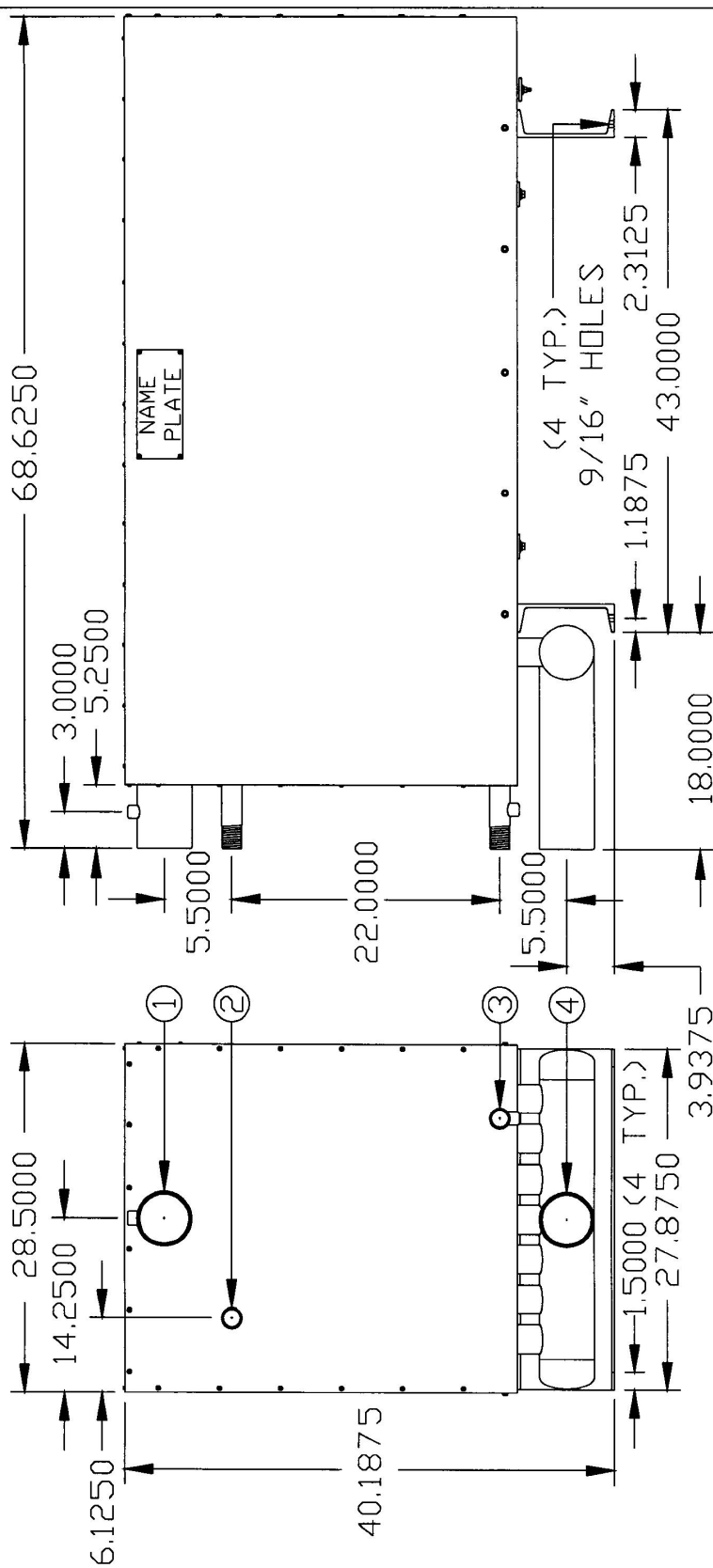


Commercial/Industrial: [AdamM@doucetteindustries.com](mailto:AdamM@doucetteindustries.com)  
Residential/Light Commercial: [AdamM@doucetteindustries.com](mailto:AdamM@doucetteindustries.com)



**doucette**  
industries, inc

Network User, Doucette Industries 3/4/2015 12:57 PM 98313.dwg



**NOTES:**

- (1) 1/2" RELIEF FITTING REQUIRED, TOPSIDE CONNECTION #1
- (2) 1/2" DRAIN FITTING REQUIRED, BOTTOMSIDE CONNECTION #3

**CONNECTIONS:**

- 1.) AMMONIA SUPPLY 4" NOM SCH 40 A53B BUTT WELD
- 2.) WATER RETURN 1-1/4" NOM 304/304L S/S MPT
- 3.) WATER SUPPLY 1-1/4" NOM 304/304L S/S MPT
- 4.) AMMONIA RETURN 4" NOM SCH 40 A53B BUTT WELD

TOLERANCES		DOUCETTE INDUSTRIES, INC.	
DECIMAL	.125	SCALE	DRAWN BY: MLB
FRACTIONAL			APP. BY: RJR
ANGULAR		TITLE	CADS 56M8/1P-12T (C) HP
		DATE	5/3/04
		DRAWING NUMBER	98313
GAUGE	20	ALL DIMENSIONS INCHES, UNLESS SPECIFIED	

63.375 X 28.5 X 32.1875



20 Leigh Drive,  
York, Pennsylvania 17406-8474



Phone: 717-845-8746  
Toll-free: 800-445-7511  
Fax: 717-845-2864



Website: [www.doucetteindustries.com](http://www.doucetteindustries.com)



Commercial/Industrial: [AdamM@doucetteindustries.com](mailto:AdamM@doucetteindustries.com)  
Residential/Light Commercial: [AdamM@doucetteindustries.com](mailto:AdamM@doucetteindustries.com)